



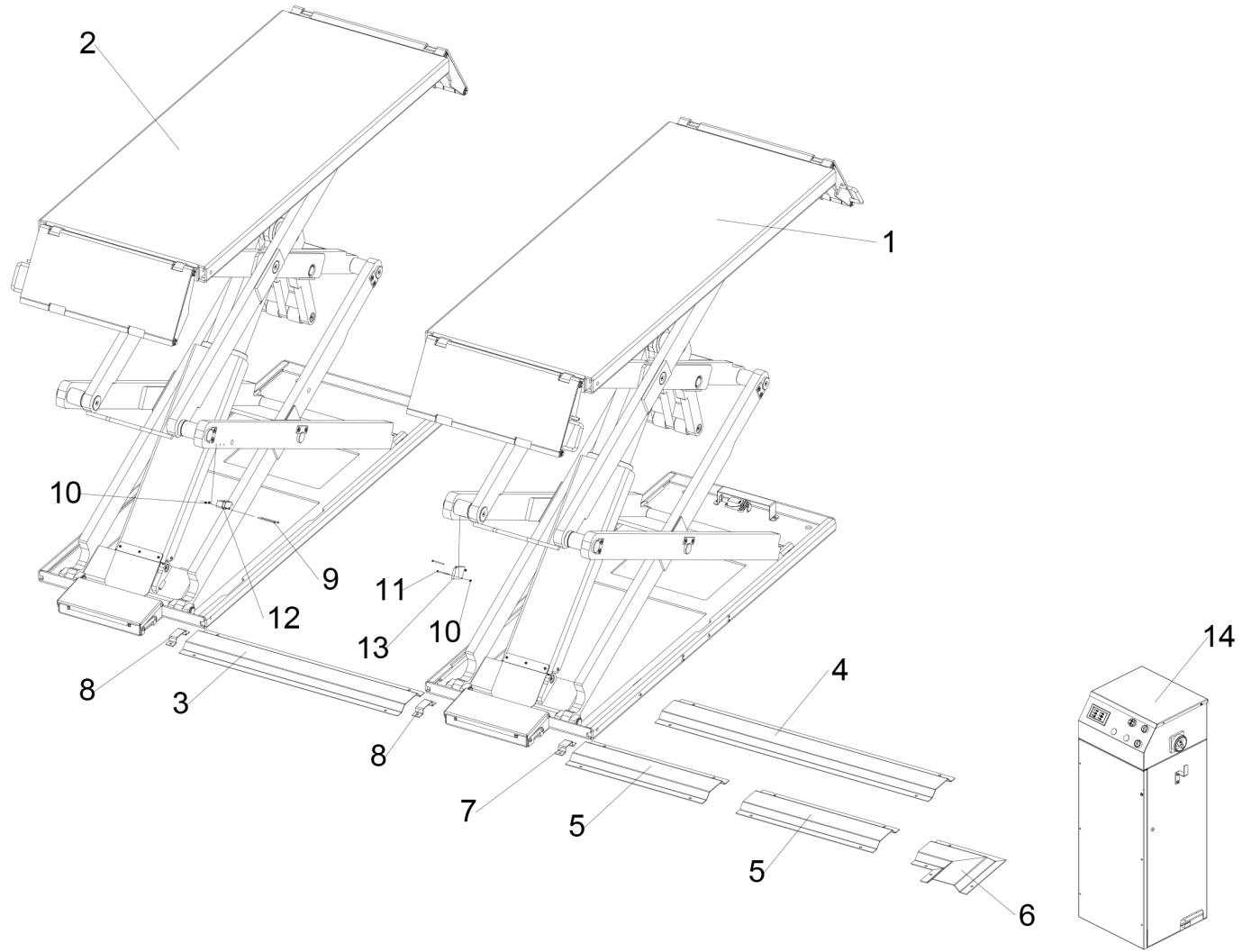
НОЖНИЧНЫЙ ЭЛЕКТРОГИДРАВЛИЧЕСКИЙ НАПОЛЬНЫЙ ПОДЪЕМНИК ПГН-4000/Н-01



КАТАЛОГ ЗАПЧАСТЕЙ

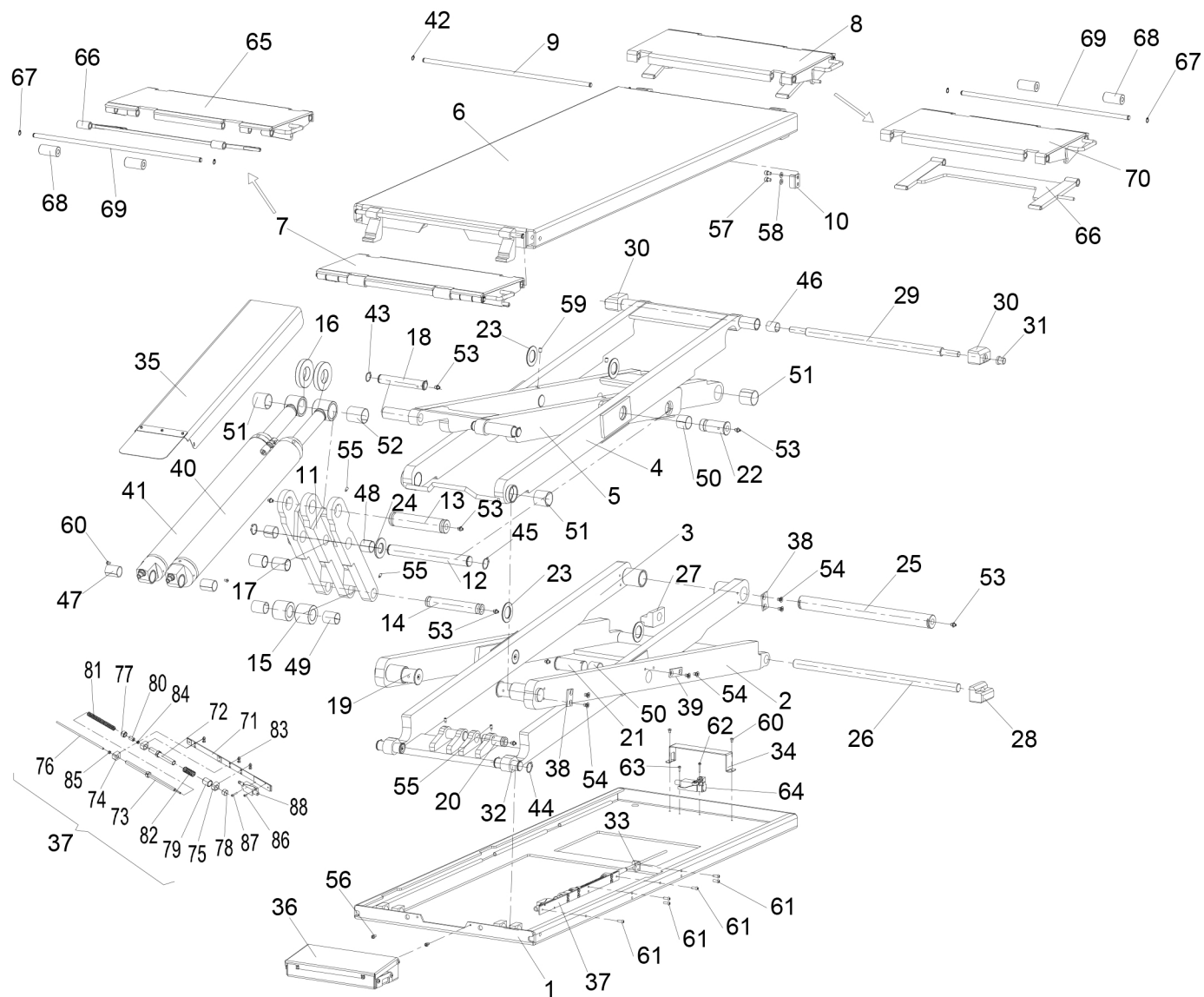
EAC

LIFT



TAV.0	LIFT	ED. 04/18
-------	------	-----------

ITEM	PART NO.	DESCRIPTION	QTY	REMARK
1	J13G010000	Runway P1	1	
2	J13G020000	Runway P2	1	
3	J13C641101	Middle cover	1	
4	J13C641201	Cover	1	
5	J13C641202	Cover	2	
6	J13C641300	Cover	1	
7	J13A641401	Pipe clamp	1	
8	J13A641402	Pipe clamp	2	
9	0206071	Screw M3X60	2	optional
10	0204058	Nut M3	4	optional
11	0206007	Screw M3X40	2	optional
12	0505057	Photocell	1	optional
13	DQ0001	Photocell reflector	1	optional
14		Control unit	1	



TAV.1	RUNWAY P1	ED. 04/18
-------	-----------	-----------

ITEM	PART NO.	DESCRIPTION	QTY	REMARK
1	J13A101100	Base	1	
2	J13A210100	Inferior outer scissor	1	
3	J13A220100	Inferior inner scissor	1	
4	J13A230100	Superior outer scissor	1	
5	J13A240100	Superior inner scissor	1	
6	J13A310100	Table	1	
7	J13A320100	Ramp 1	1	
8	J13A320200	Ramp 2	1	
9	J13C323101	Shaft	2	
10	J13C330101	Support	2	
11	J13A410100	Lifting lever	1	
12	J13C420101	Lever middle shaft	1	
13	J13C420102	Lever upper shaft	1	
14	J13C420103	Lever lower shaft	1	
15	J13A420104	Lever lower wheel	2	
16	J13A420105	Spacer	2	
17	J13C420107	Spacer	2	
18	J13C510101	Upper shaft	2	
19	J13A510102	Shaft	2	
20	J13C510103	Cylinder lower shaft	2	
21	J13C510104	Middle shaft	2	
22	J13C510105	Middle shaft	2	
23	J13C510106	Spacer	4	
24	J13C510107	Spacer	2	
25	J13A510108	Middle shaft	1	
26	J13C510109	Lower shaft	1	
27	J13A510110	Lower slider 1	1	

TAV.1	RUNWAY P1	ED. 04/18
-------	-----------	-----------

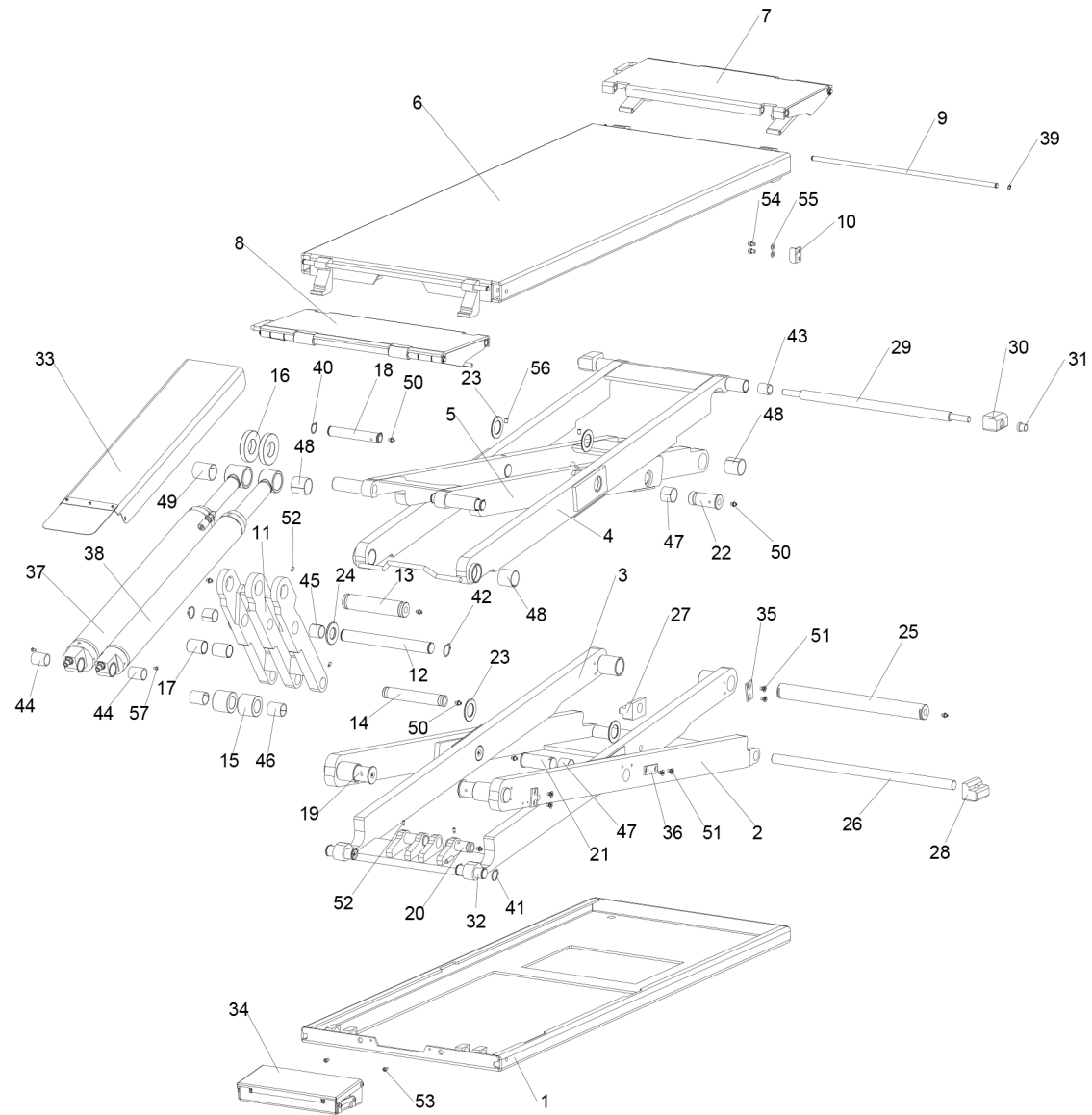
28	J13A510111	Lower slider 2	1
29	J13C510112	Upper shaft	1
30	J13A510113	Upper slider	2
31	J13A510114	Upper shaft bush	2
32	J13A510115	Lower shaft	2
33	J13A611205	Support	1
34	J13A612101	Support	1
35	J13G621000	Cylinder protection	1
36	J13A631000	Hose protection box assembly	1
37	J13A650000	Switch actuating assembly	1
38	NS60000-05	Fastening plate	4
39	NS60000-06	Fastening plate	2
40	J13GY70000d	Master hydraulic cylinder	1
41	J13GY60000d	Slave hydraulic cylinder	1
42	0212001	Seeger D.12	4
43	0212004	Seeger D.25	4
44	0212020	Seeger D.28	4
45	0212021	Seeger D.30	2
46	0210010	Bush SF-1/2530	2
47	0210012	Bush SF-1/2840	2
48	0210015	Bush SF-1/3030	2
49	0210016	Bush SF-1/3040	2
50	0210023	Bush SF-1/3530	4
51	0210031	Bush SF-1/4040	5
52	0210033	Bush SF-1/4050	1
53	0215021	Greaser 8X1	18
54	0207016	Screw M8X12	12

TAV.1	RUNWAY P1	ED. 04/18
-------	-----------	-----------

55	0209002	Screw M6X10	6
56	0202030	Screw M6X10 - GB/T70.1	2
57	0202097	Screw M8X10 - GB/T70.1	4
58	0205008	Washer D.8 - GB/T97.1	4
59	0209060	Screw M8X12	2
60	0206030	Screw M5X8	4
61	0206048	Screw M6X16 - GB/T70.2	6
62	0206017	Screw M4X25	1
63	0206013	Screw M4X12	1
64	0505018	Limit switch 8108	1
65	J13A321100	Ramp	1
66	J13A322100	Ramp locking plate	2
67	0212001	Seeger D.12	4
68	YA20-0464	Ramp roller	4
69	J13C323101	Ramp shaft	2
70	J13A321200	Ramp	1
71	J13A650100	Support	1
72	J14C650200	Bush	1
73	J14C650300	Shaft	1
74	J13A650401	Front support	1
75	J13A650402	Back support	2
76	J13A650403	Bar	1
77	J14C650404	Nut flange	1
78	J14C650405	Cover	1
79	J14C650406	Bush	1
80	J14C650407	Bush	1
81	J14C650408	Spring	1

TAV.1	RUNWAY P1	ED. 04/18
-------	-----------	-----------

82	J14C650409	Spring	1
83	0207079	Screw M6X8	6
84	0204003	Nut M6 - GB/T889.1	1
85	0203035	Nut M6	1
86	0206013	Screw M4X12	1
87	0206017	Screw M4X25	1
88	0505036	Limit switch 8112	1



TAV.2	RUNWAY P2	ED. 04/18
-------	-----------	-----------

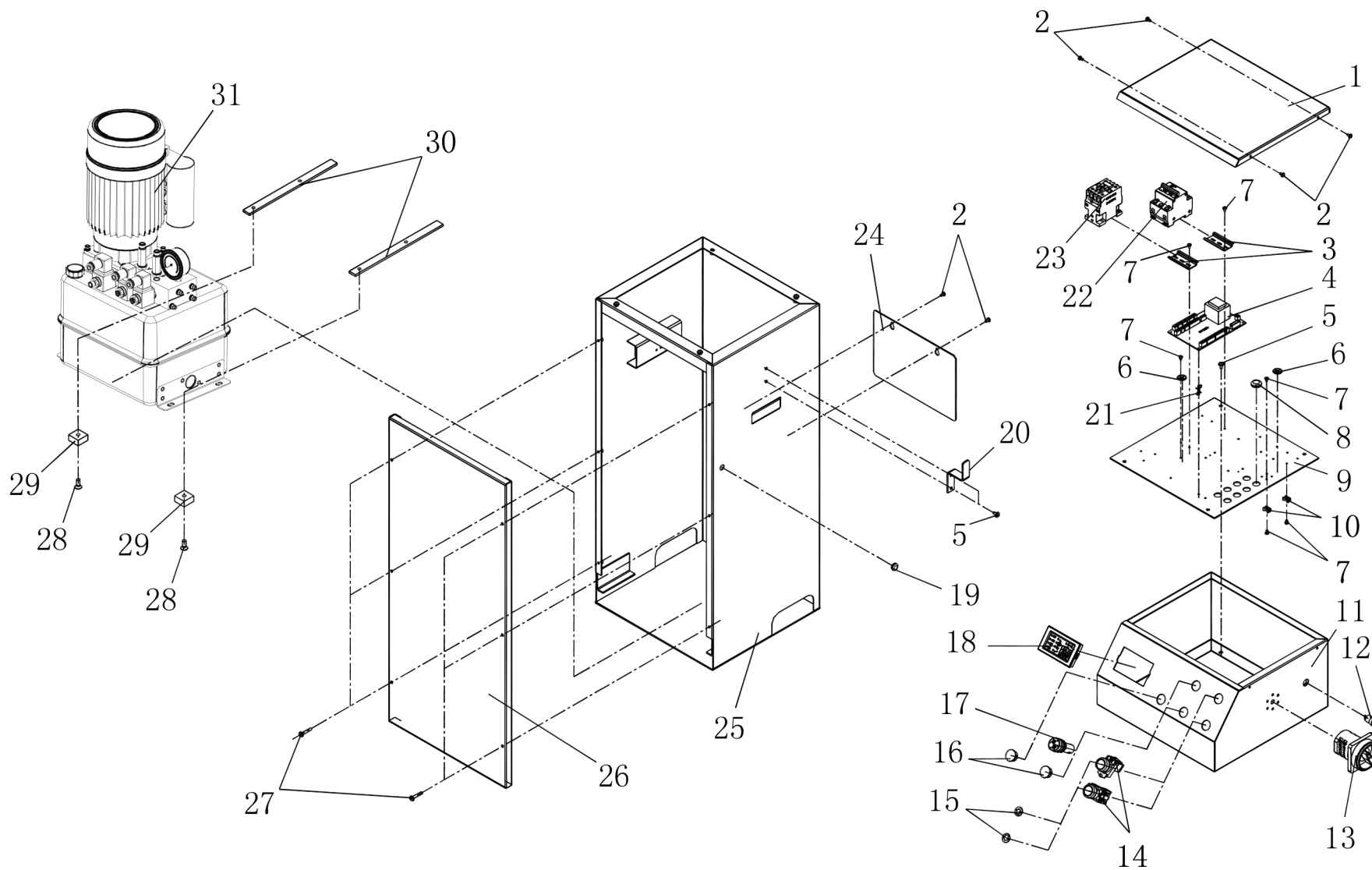
ITEM	PART NO.	DESCRIPTION	QTY	REMARK
1	J13A101200	Base	1	
2	J13A210200	Inferior outer scissor	1	
3	J13A220200	Inferior inner scissor	1	
4	J13A230100	Superior outer scissor	1	
5	J13A240100	Superior inner scissor	1	
6	J13A310100	Table	1	
7	J13A320100	Ramp 1	1	
8	J13A320200	Ramp 2	1	
9	J13C323101	Shaft	2	
10	J13C330101	Support	2	
11	J13A410200	Lifting lever	1	
12	J13C420101	Lever middle shaft	1	
13	J13C420102	Lever upper shaft	1	
14	J13C420103	Lever lower shaft	1	
15	J13A420104	Lever lower wheel	2	
16	J13A420105	Spacer	2	
17	J13C420107	Spacer	2	
18	J13C510101	Upper shaft	2	
19	J13A510102	Shaft	2	
20	J13C510103	Cylinder lower shaft	2	
21	J13C510104	Middle shaft	2	
22	J13C510105	Middle shaft	2	
23	J13C510106	Spacer	4	
24	J13C510107	Spacer	2	
25	J13A510108	Middle shaft	1	
26	J13C510109	Lower shaft	1	
27	J13A510110	Lower slider 1	1	

TAV.2	RUNWAY P2	ED. 04/18
-------	-----------	-----------

28	J13A510111	Lower slider 2	1
29	J13C510112	Upper shaft	1
30	J13A510113	Upper slider	2
31	J13A510114	Upper shaft bush	2
32	J13A510115	Lower shaft	2
33	J13G621000	Cylinder protection	1
34	J13A631000	Hose protection box assembly	1
35	NS60000-05	Fastening plate	4
36	NS60000-06	Fastening plate	2
37	J13GY70000	Master hydraulic cylinder	1
38	J13GY60000	Slave hydraulic cylinder	1
39	0212001	Seeger D.12	4
40	0212004	Seeger D.25	4
41	0212020	Seeger D.28	4
42	0212021	Seeger D.30	2
43	0210010	Bush SF-1/2530	2
44	0210012	Bush SF-1/2840	2
45	0210015	Bush SF-1/3030	2
46	0210016	Bush SF-1/3040	2
47	0210023	Bush SF-1/3530	4
48	0210031	Bush SF-1/4040	5
49	0210033	Bush SF-1/4050	1
50	0215021	Greaser 8X1	18
51	0207016	Screw M8X12	12
52	0209002	Screw M6X10	6
53	0202030	Screw M6X10 - GB/T70.1	2
54	0202097	Screw M8X10 - GB/T70.1	4

TAV.2	RUNWAY P2	ED. 04/18
-------	-----------	-----------

55	0205008	Washer D.8 - GB/T97.1	4
56	0209060	Screw M8X12	2
57	0206030	Screw M5X8	2

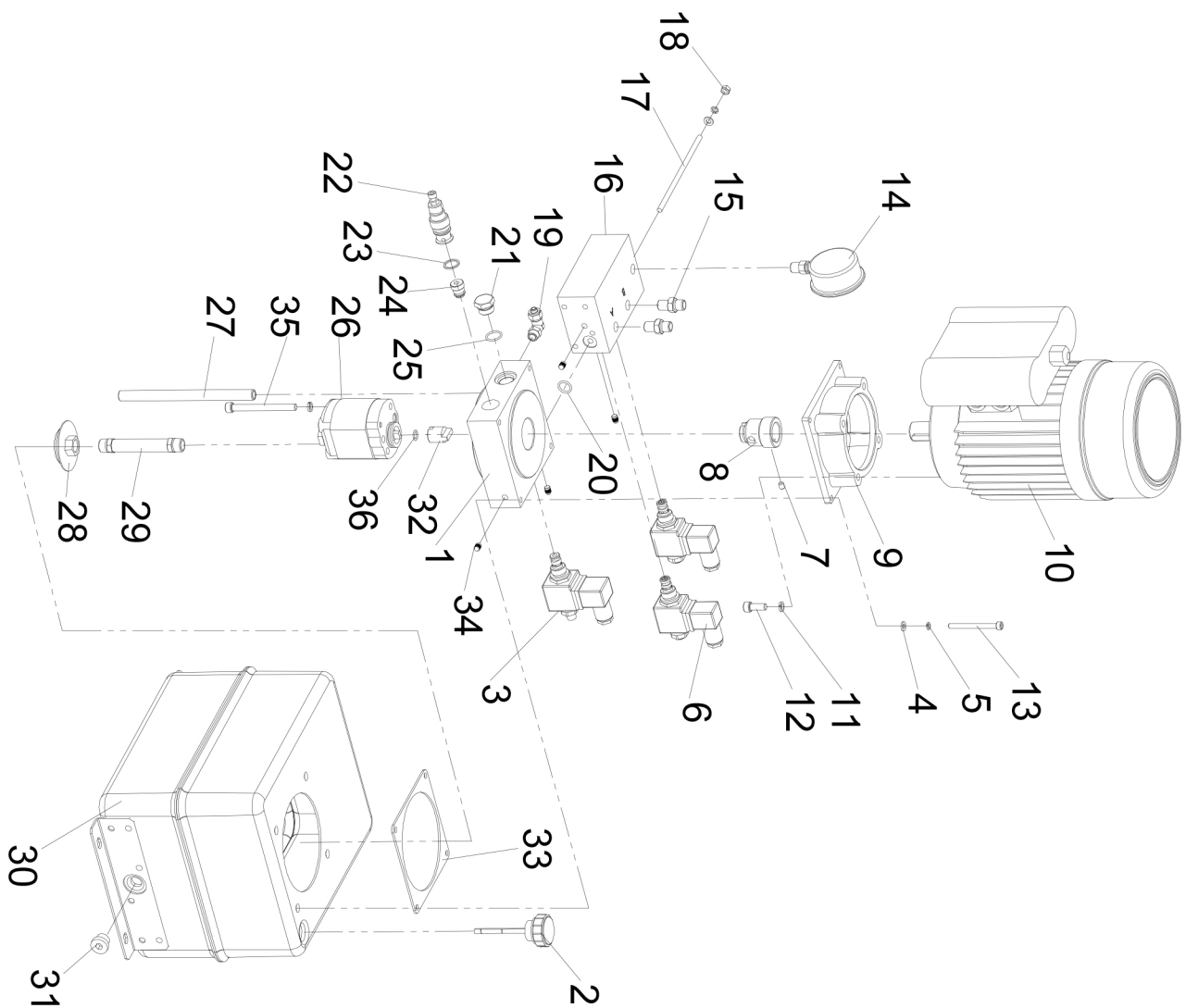


TAV.14	CONTROL UNIT	ED. 04/18
--------	--------------	-----------

ITEM	PART NO.	DESCRIPTION	QTY	REMARK
1	J04A030002	Panel cover	1	
2	0206059	Screw M4X12	6	
3	0508330	Guide DZ47 L=60mm	2	
4	0507367	CPU board 102.1	1	
5	0206058	Screw M5X10	6	
6	0510380	Grounding decal	2	
7	0206019	Screw M4X6 - GB/T818	10	
8	0508017	Cable relief	8	
9	J04A110001	Support	1	
10	0508018	Holder HC-1(Φ4)	2	
11	J04A113000	Top box	1	
12	0502017	Pushbutton LA16Y-11-Y	1	
13	0505022	Power switch HZ5-2-20A	1	
14	0502024	Pushbutton LAY37T-10	2	
15	0510196	Up decal	2	
16	0508019	Plug HP-22	2	
17	0502021	Buzzer AD16-22SM(AC、DC24V)	1	
18	0507163	Function display 502D	1	
19	0508013	Cable relief GM-1710	1	
20	3002002009	Cable holder	1	
21	0508302	Holder HDB-16A	4	
22a	0501066	Breaker DZ47-63/3P-D16A	1	For 380V/3ph
22b	0501074	Breaker DZ47-63/3P-D32A	1	For 220V/1ph
23	0501001	AC contactor CJX2-1210 (AC220V)	1	
24	3054503904	Back cover	1	
25	J04A031000	Lower box	1	
26	J04A030003	Front cover	1	

TAV.14	CONTROL UNIT			ED. 04/18
--------	--------------	--	--	-----------

27	0206028	Screw M5X25	6
28	0207019	Screw M8X20 - GB/T819.1	4
29	3032084008	Rubber pad	4
30	3002005001	Support	2
31	BZ-W2K2Y-1	Hydraulic power unit	1

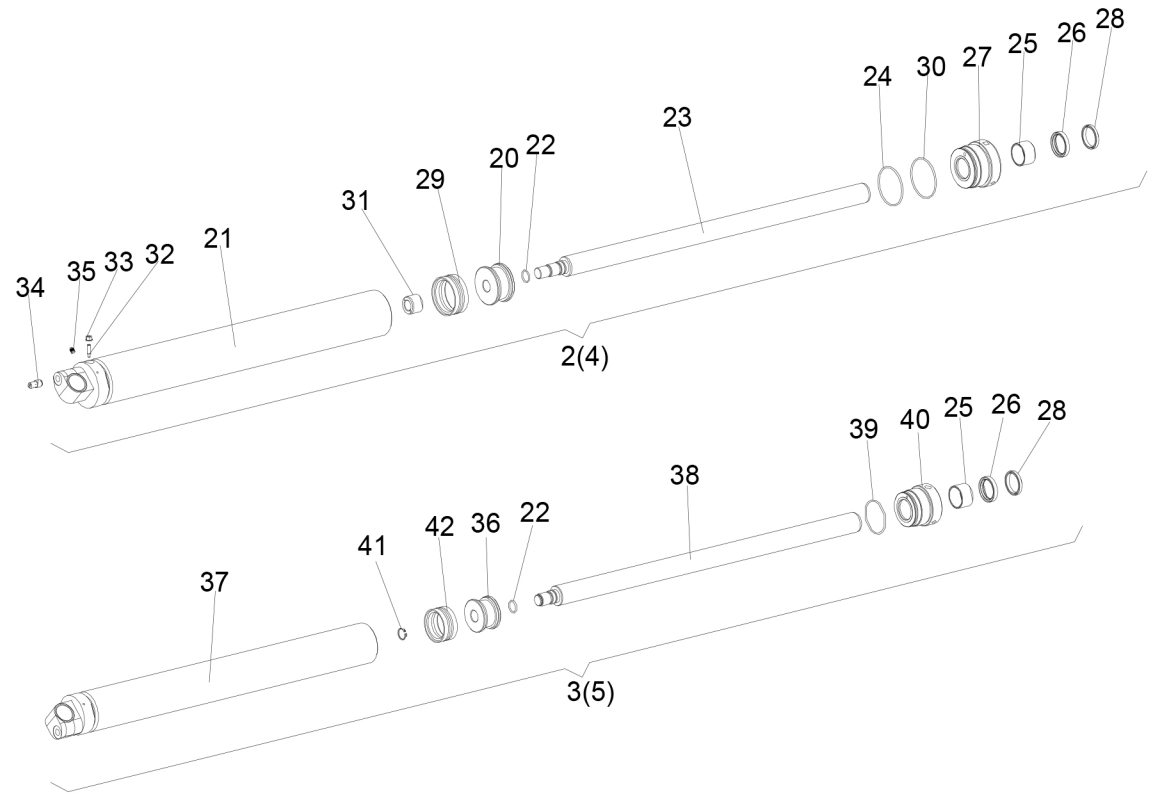
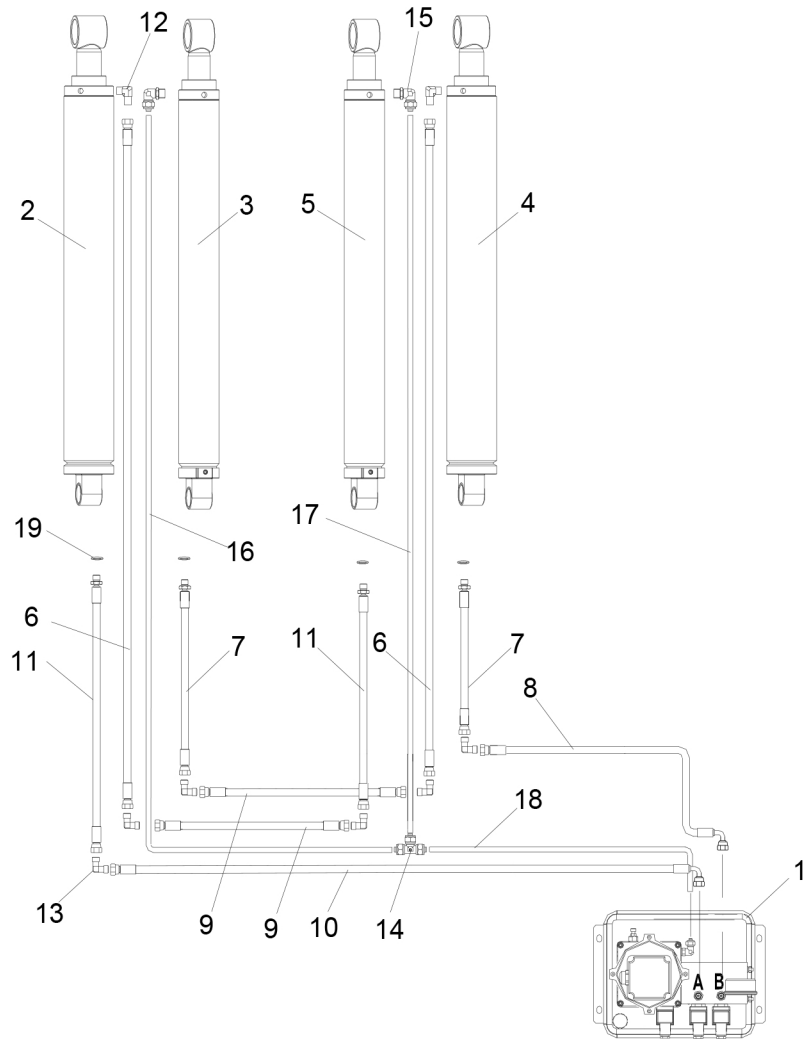


TAV.14.31	HYDRAULIC POWER UNIT	ED. 04/18
-----------	----------------------	-----------

ITEM	PART NO.	DESCRIPTION	QTY	REMARK
1	BZ-ZB-W2	Manifold	1	
2	0305087	Oil level plug G3/4"	1	
3	0307049	Lowering solenoid valve 220VDC	1	
4	0205006	Washer D.6 - GB/T97.1	8	
5	0208005	Spring washer D.6 - GB/T93	8	
6	0307043	Switching solenoid valve DC220V	2	
7	0209042	Screw M6X8 - GB/T80	1	
8	BZ-ZT24	Motor joint	1	
9	BZ-DJ-1B	Motor flange	1	
10a	0509075	Motor 230V/400V/50HZ/3PH 2.6KW	1	
10b	0509070	Motor 220V/380V/50Hz/3PH 2.6KW	1	
10c	0509071	Motor 220V/50Hz/1PH 2.2KW	1	
10d	0509092	Motor 220V/60Hz/1PH 2.2KW	1	
10e	0509068	Motor 230V/50HZ/1PH 2.2KW	1	
11	0208006	Spring washer D.8 - GB/T93	6	
12	0202045	Screw M8X20 - GB/T70.1	4	
13	0202036	Screw M6X65 - GB/T70.1	4	
14	0305054	Pressure gauge LA-60X400	1	
15	0303063	Union 1/4 1BT-04SP	2	
16	BZ-W-YK2Y	Interface block	1	
17	0213032	Double-screw bolt M6X160	4	
18	0203035	Nut M6	4	
19	0306067	Union 10 ZG1-4	1	
20	0309019	O-ring 18X2.4 - GB1235	1	
21	BZ-SD-01	Plug	1	
22	0307010	Pressure overload valve FYF06-01-00	1	
23	0313057	Copper washer 16X20	1	

TAV.14.31	HYDRAULIC POWER UNIT	ED. 04/18
-----------	----------------------	-----------

24	0307067	Non return valve GDF-06-07-00	1	
25	0309054	O-ring 17X2	1	
26a	0301054	Gear pump3.3CC	1	For 3PH motor
26b	0301053	Gear pump1.6CC	1	For 1PH motor
27	BZ-NG14X180	Oil return pipe	1	
28	0305010	Oil filter ZG3/8" ZF-08	1	
29	BZ-NG18X110	Oil suction pipe	1	
30	HK2-0200	Oil tank	1	
31	0305018	Plug 4BN-06WD G3/8	1	
32	BZ-BJ25	Pump joint	1	
33	BZ-F-01	Gasket	1	
34	0305001	Plug ZBJ22 007-QD07	4	
35	0202052	Screw M8X85- GB/T70.1	2	
36	0309014	O-ring 13X1.9	1	



TAV.5	HYDRAULIC CYLINDERS	ED. 04/18
-------	---------------------	-----------

ITEM	PART NO.	DESCRIPTION	QTY	REMARK
1	BZ-W2K2Y-1	Hydraulic power unit	1	
2	J13GY70000	Master hydraulic cylinder	1	
3	J13GY60000	Slave hydraulic cylinder	1	
4	J13GY70000d	Master hydraulic cylinder	1	
5	J13GY60000d	Slave hydraulic cylinder	1	
6	ZZ900	Hydraulic hose L=900	2	
7	ZY205	Hydraulic hose L=205	2	
8	ZW2870	Hydraulic hose L=2870	1	
9	ZZ1300	Hydraulic hose L=1300	2	
10	ZW4200	Hydraulic hose L=4200	1	
11	ZY230	Hydraulic hose L=230	2	
12	0303002	90° union 1/4 1BT9-04SP	2	
13	0303010	Union 90 degree union1B9-04SP	6	
14	0306081	Tee union D.10	1	
15	0306067	Rotation union 10-1/4	2	
16	0306109	PU hose 10X6.5X2300C	1	
17	0306109	PU hose 10X6.5X900C	1	
18	0306109	PU hose 10X6.5X3000C	1	
19	0313001	Washer 1/4	4	
20	YAY-70-3	Piston	1	
21	J13GY70100	Cylinder liner	1	
22	0309022	O-ring 24X2.4	2	
23	J13GY70802	Piston Rod	1	
24	0309125	O-ring 73X3.1	1	
25	0305006	Guide ring 36X25X2.5	2	
26	0310031	Seal 36X46X8	2	
27	YAY-70-5	Cylinder guide cover	1	

TAV.5	HYDRAULIC CYLINDERS	ED. 04/18
-------	---------------------	-----------

28	0311016	Scraper 36X44X5/6.5	2
29	0312028	Gasket 70X58X20.5	1
30	0309039	O-ring 75X3.1	1
31	J13AY75805	Nylon washer	1
32	YF6-M6	Flow restricting pin M6	1
33	0305015	Seal nut M6	1
34	0307121	Lowering speed control valve D.1.4	1
35	0305001	Plug QD07	1
36	YAY-60-3	Piston	1
37	J13GY60100	Cylinder liner	1
38	J13GY60802	Piston Rod	1
39	0309035	O-ring 63X3.1	1
40	YAY-60-5	Cylinder guide cover	1
41	0212005	Seeger D.20 - GB/T894.1	1
42	0312027	Gasket 60X48X20.5	1